

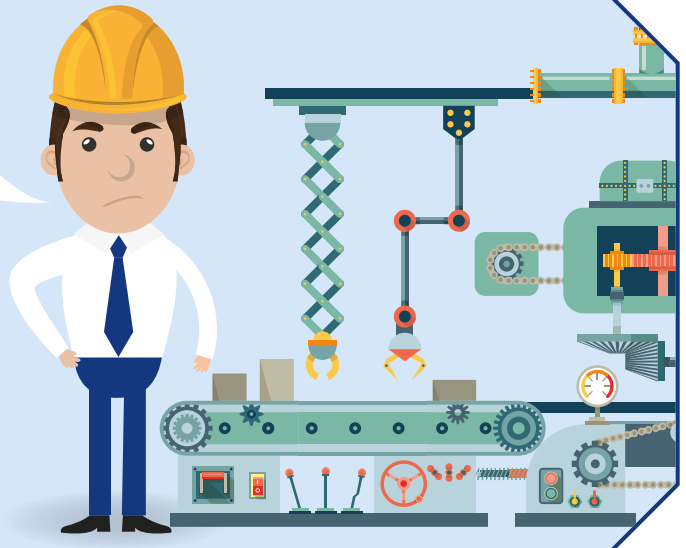
# SAFETY WITH A TWIST

Play it safe with R. STAHL's new safety switch, and have your machine up and running again in no time. Whether it uses a direct drive motor or variable-frequency drive motor, the 8146/5-V37 and 8150/5-V37 series safety switches make machine maintenance easy, and the triple locking mechanism provides guaranteed protection until you start the machine up again.

## Machine maintenance ...?

It really stresses me out! It's time to carry out the machines' regular, scheduled maintenance work yet again. But before that can be started, I have to rally the team.

Works engineer Harry M. and his team are responsible for the machinery located in the hazardous area within the chemical plant where they work. The scheduled maintenance work required there is both time-consuming and exasperating. And the person who plays the most crucial role in this work is never available when you need them.



## ... R. STAHL has the solution

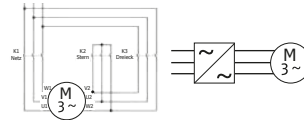
Where is the electrician? We urgently need him to shut down the machinery!

The team of engineers includes a qualified electrician, but he has been called away to attend to an emergency and won't be available until tomorrow. Time is of the essence.

Why don't you check the safety switches from R. STAHL? Reliable and efficient as always. Your team could get back to work in a jiffy.



But the machinery uses both direct drive and variable-frequency drive motors. That's quite an herculean task.



**SIMPLE**

The 8146/5-V37 and 8150/5-V37 series switches can be used with any drive, whether your machines use direct drive or variable-frequency drive motors.

R. STAHL offers a wide range of safety switches. Your requirement is our priority!



**SAFE**



When the machine is off, will it really stay off?



This is why R. STAHL's safety switches feature a triple locking mechanism as a safety net to stop you from getting bloody fingers.

**The benefits at a glance**

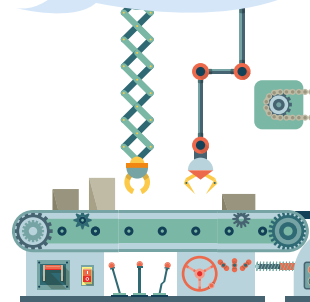
- Safe
- Simple
- Flexible
- Cost-effective
- Fast



Harry M. is playing it safe with R. STAHL's safety switches. These switches comply with IEC/EN 62626-1, Class 1, and are both versatile and easy to use. In the future, his team will be able to maintain and clean machinery and system components even without a qualified electrician present. This will save him not only money but the most precious time as well.



Machine maintenance made safe by R. STAHL's safety switches.



**STAHL**

THE STRONGEST LINK.